

Time to play



serve happy®

Outdoor table tennis and table



Z Frame
in Deep Blue



H Frame
in Lagoon Blue

Serve Happy tables are designed for the great outdoors, for great fun and great times.

Putting a smile back into your garden or some 'happy' into your indoors. Play on them and eat at them.

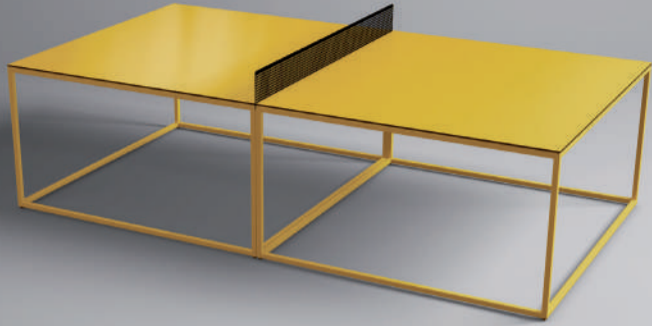
You may not need one but you know you want one!

So why Serve Happy?

After a fruitless search for an outside table tennis table that was both good looking and could be moved - Serve Happy was born. Added to that, the lack of space for both outdoor furniture and a table tennis table led us to combining the two. Bright colours, modern design, all-weather and easily adapted for eating - it's a win, win, win!

We play

Our range of tables are designed for outside play, in all weather, all year round.



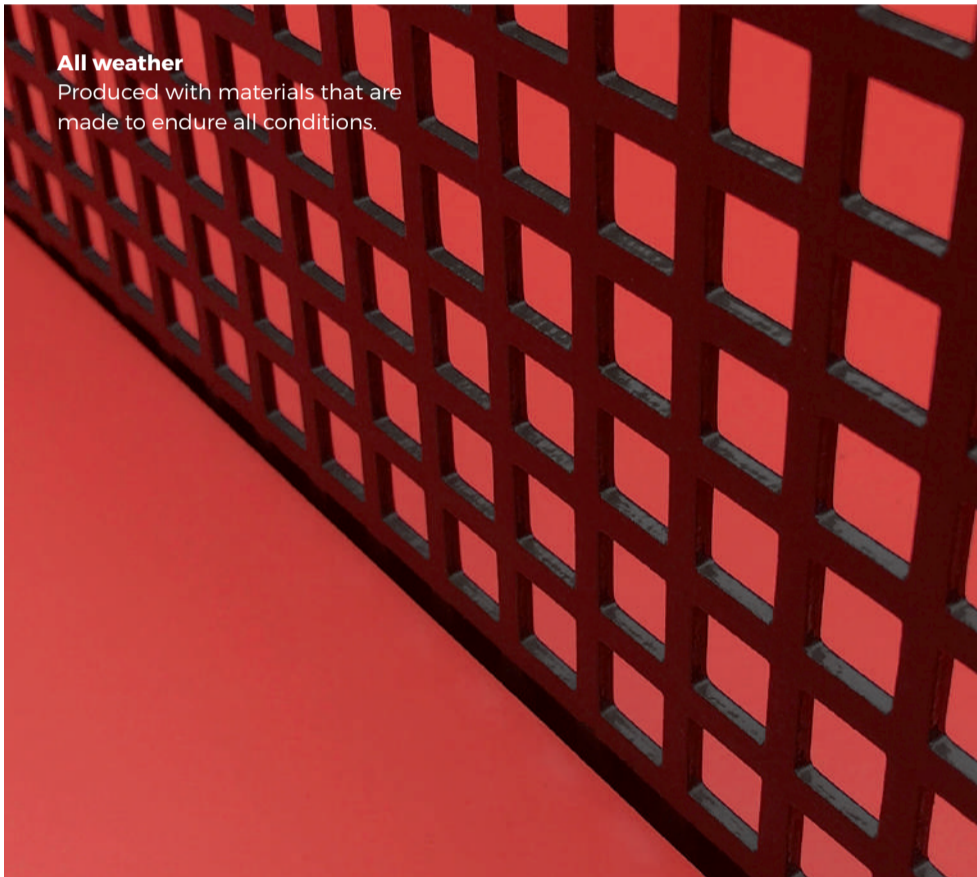
We eat

Add a little fun to your alfresco with Serve Happy. Simply remove the net!



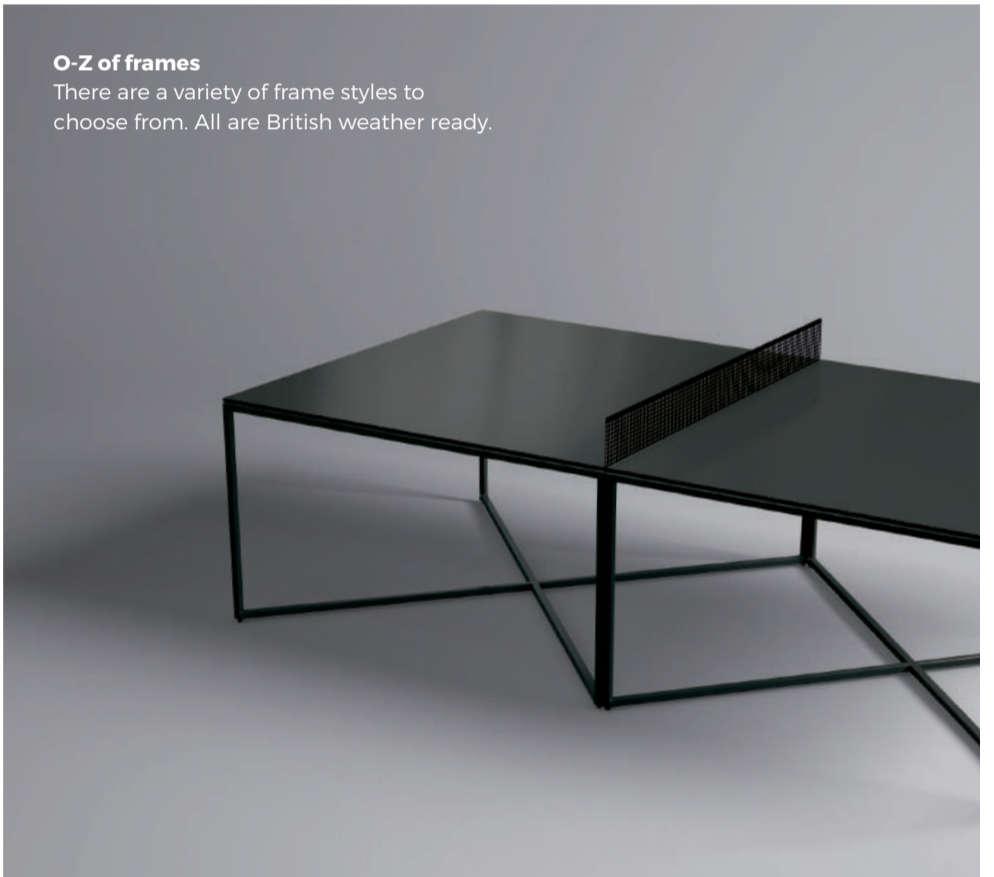
All weather

Produced with materials that are made to endure all conditions.



O-Z of frames

There are a variety of frame styles to choose from. All are British weather ready.



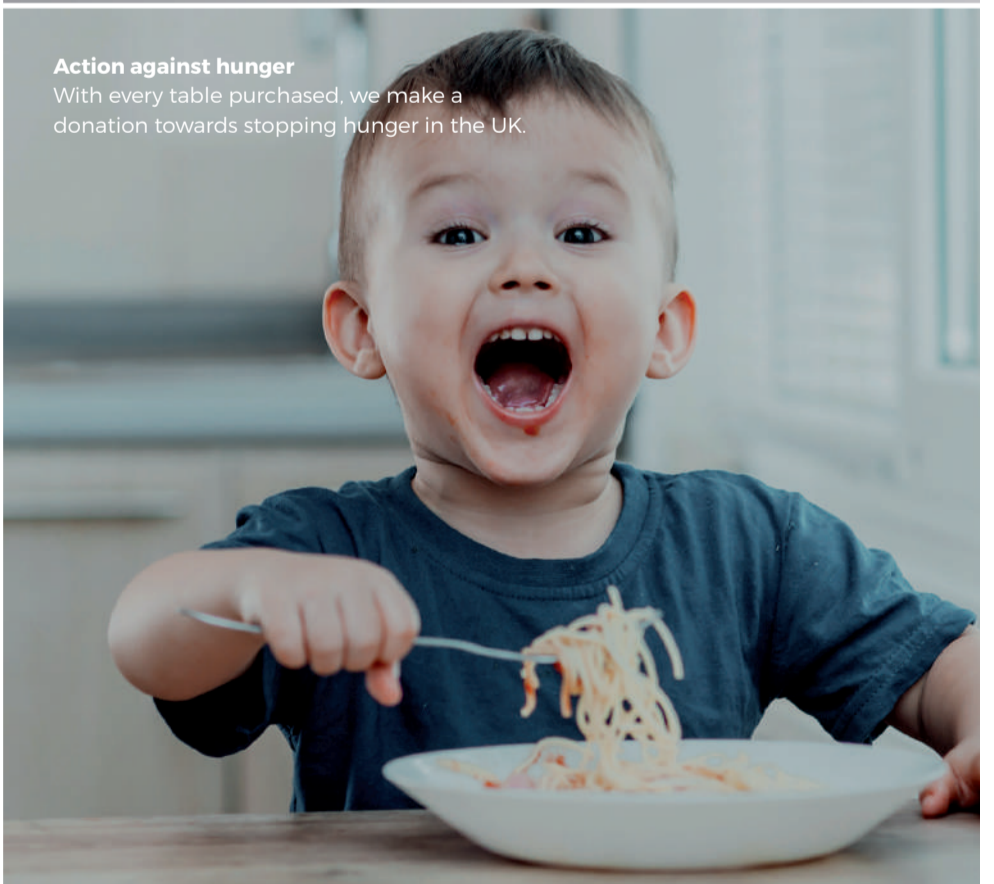
Matching benches

Complete the look and add matching benches. Or why not mix and match your colours? Standard chairs also work.



Action against hunger

With every table purchased, we make a donation towards stopping hunger in the UK.



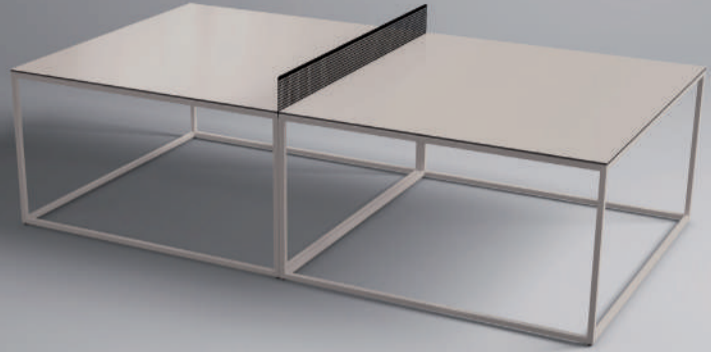


○ Frame
in Sunny Yellow

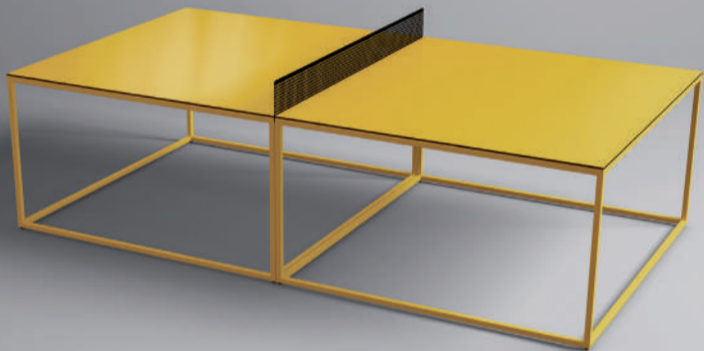
Stealth Grey
RAL 7021



Cloudy Grey
RAL 7035



Sunny Yellow
RAL 1023



Carnaval Red
RAL 3020



Lagoon Blue
RAL 6027



Deep Blue
RAL 5005





Choose your happy

Currently, we have a range of six colourways. Either go big with a sunny yellow or keep things on the down-low with stealth grey.



British weather ready

Built from materials that combine excellent weather and UV resistant properties, ensure the colour the colour doesn't fade when the sun does eventually come out.

Size

Serve Happy tables are made to the official table tennis specification: 274cm long, 152cm wide and 76cm high. The net is approx 15cm and the bounce has been tested to match up to professional indoor tables.

Positioning

Somewhere flat! If it can be sheltered from the wind that is generally best, but that can also add to the fun!

Registered designs

This is our baby and we are very proud parents ;) Each table is fully design registered meaning our tables can not be beaten or copied. They are the one and only.

Personalisation

You can mix and match the colours to suit. Perhaps one half in red and the other blue, or different coloured tops and legs. We can also add a logo, a date or initials, or create something unique for you. Simply get in touch and we can discuss the options.

Materials

The frames and net are built from steel and powder coated. The top is made from an all weather composite material designed to withstand the elements. The table comes in two parts that slot together. Each can be lifted and moved by two people.

Maintenance

Our tables are designed to need very little maintenance. Warm soapy water and a soft cloth or sponge usually do the trick. Harder to remove marks might need assistance from a simple household cleaning spray (like Cif) but never use anything corrosive or abrasive. A window squeegee clears rain water (and snow) quickly. It does not need to be covered and no cover is provided.

Benches & chairs

Complete the look and add matching benches. We can also advise on chair options. Some frame designs mean you can't tuck 'some chair designs', but from testing this has not been a problem; you can certainly sit and eat comfortably at the table.

How to order

Step 1 - Choose your colour

Either go big with a sunny yellow or keep things on the down-low with stealth grey!

Step 2 - Choose your frame

With our O-Z of frames, you can choose the look that works best for your setting.

Step 3 - Give us a hola

We'll answer any questions you may have, discuss costs and get your order underway. 01905 29890 (ask for Serve Happy) or email: info@servehappy.co.uk

Step 4 - Delivery

We offer a white glove delivery service as standard. Special care and attention is taken whilst our two-man team deliver and install your table. You can sit back and relax.

Doing good

We appreciate we're not saving the world but with every table bought we make a donation towards stopping hunger in the UK. The money goes to the fantastic charities such as the Trussell Trust.

Time to eat



Create your Serve Happy at:
servehappy.co.uk